

BUILD YOUR OWN WALL•E PAPER MODEL

WHAT YOU'LL NEED:

Scissors, Adhesive (glue or tape),
Construction paper (optional).

DIRECTIONS to build WALL•E's head (page 1):

Step 1: Cut along solid red lines. (TIP: Before cutting, glue templates to construction paper to make your WALL•E model more durable.)

Step 2: Fold down along dotted lines unless indicated otherwise.

Step 3: Roll and tape "A" to create the neck (see **Diagram 1**). Tape "B" underneath the top panel of the head to secure neck. (HINT: Roll tape and place on the underside of tabs.)

Step 4: Roll the remaining side panels around WALL•E's eyes to form the head (see **Diagram 2**). Tape "C" to "B." Tape "E" to underside of head. Tape "D" to "E" and "F" to "C." (HINT: Roll tape and place on the underside of tabs.)

Step 5: Push the front and back of WALL•E's eyes into the sockets to finish his paper head!

DIRECTIONS to build WALL•E's body (page 2):

Step 1: Cut along solid red lines. (TIP: Before cutting, glue templates to construction paper to make your WALL•E model more durable.)

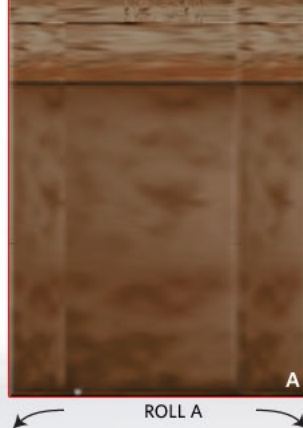
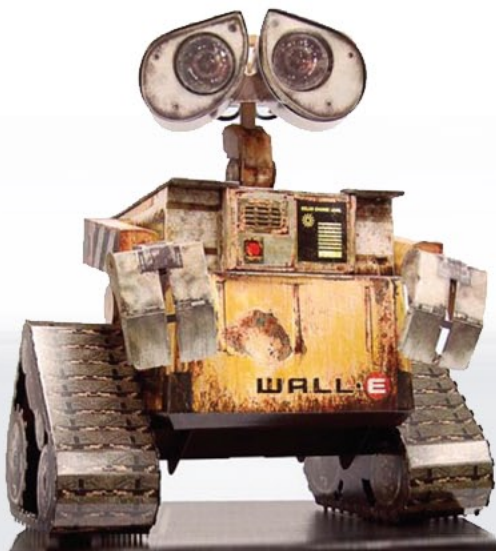
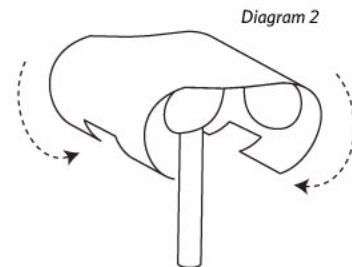
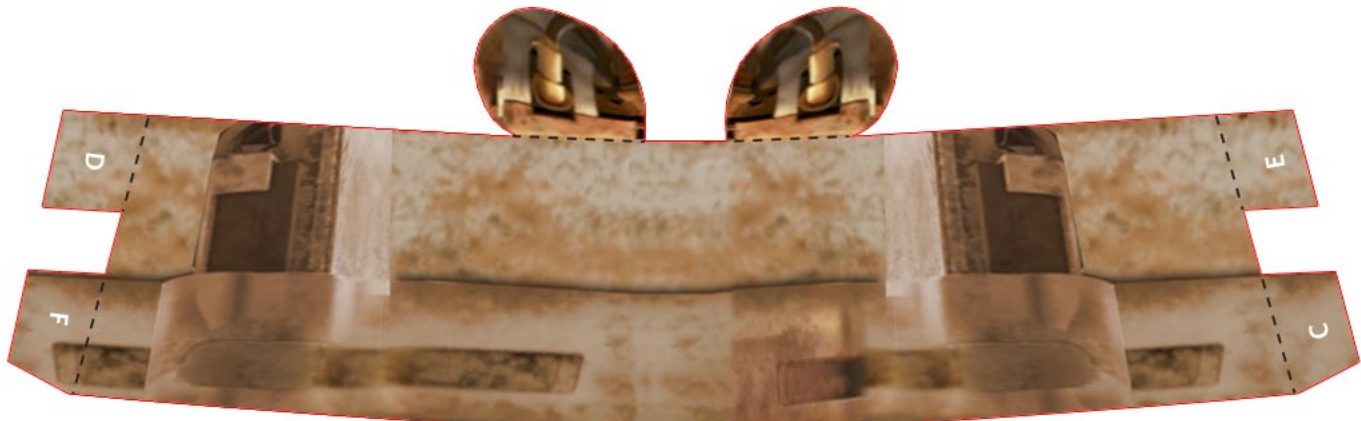
Step 2: Fold down along dotted lines unless indicated otherwise.

Step 3: Construct WALL•E's body by folding together the 6 square sides. Tuck in all tabs except "G" and "H" tabs. To stabilize the body, tape to secure.

Step 4: Roll up tab "G" and tape so that the dots overlap. Repeat for tab "H".

Step 5: Construct WALL•E's legs by folding over tabs "I". Roll treads to wrap around the "I" tabs. Tape to secure.

Step 6: To complete your WALL•E paper model, push the neck through hole "J" and tape the legs to rolled tabs "G" & "H".



Disney • PIXAR
WALL•E
JUNE 27



Use your Disney Dream Reward Dollars® toward all your Disney purchases and save!*



